

ECHO 81

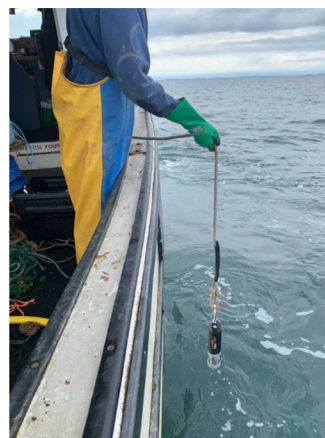
YOUR SUBSEA SOLUTIONS SPECIALIST



X2 Series

MULTIPARAMETER SONDES

The X2-Series is a highly configurable family of multiparameter sondes designed for a wide range of data collection applications. Use one instrument for a variety of applications and depth ranges thanks to exchangeable technology.



Suitable for Any Situation

X2-Series instruments are backed by AML Oceanographic's industry leading service and support. They are proven to support minimum complexity and maximum return. AML Instruments are commonly used in the following applications:

- Shallow & deep profiling
- Coastal monitoring
- Buoy/In-situ deployments
- AUV/Glider integration
- ROV integration
- Transducer mount/surface SV
- OEM integration

Technical Specifications

| | AML-1 | AML-3 | | AML-6 | |
|-----------------------|------------|-----------------------------------|---------------|---------------------------|---------------------------|
| Max. Depth | 6000m | 500m | 6000m | 500m | 6000m |
| Number of Ports | | 3 (Option for up to 5) | | 6 (Option for up to 8) | 6 (Option for up to 8) |
| Biofouling Protection | | Street Lamp UV | NIA | Street Lamp UV | N/A |
| Communication | RS232 | WiFi, USB-C, RS232 | USB-C, RS-232 | WiFi, USB-C, RS232 | USB-C, RS-232 |
| Input Voltage | 8-26 VDC | 8-30 VDC | | | |
| Pressure Housing | | Acetal | Titanium | Acetal | Steel Reinforced Acetal |
| Protective Cage | Titanium | StainlessSteel (Optional CuN1) | | | |
| Dimensions | 80 x 33 mm | 332 x 76mm | 400 x 100 mm | 600 x 100 mm | |
| Weight in Air | 0.27 kg | 1.36 kg | 2.4 kg | 4.0 kg | 4.9 kg |
| Weight in Water | 0.20 kg | 0.69 kg | 1.3 kg | 2.1 kg | 2.8 kg |
| Software | | Sailfish | | | |

Why use X2•Series Instrumentation?

No Wasted Time

If one sensor is inaccessible, spares are easily exchangeable, allowing operations to keep going.

Reduced Training

Less user training time for fewer instruments.

Wireless Capability

Automatic WiFi data transfer for shallow instruments.

Flexibility

Instruments can be used for more than one application.

Reduced Costs

Lower logistical costs by shipping small sensor heads instead of larger, heavier instruments.

Think Beyond

X2•Series allows for cost effective upgrades and/or configuration changes at any time.



Visit our website for more info:
www.echo81.com



+1 706-522-3022 • info@echo81.com
481 S. Jackson Street, Hartwell, GA 30643

