

# ECHO 81

YOUR SUBSEA SOLUTIONS SPECIALIST



## EdgeTech

### 3400-OTS

POLE-MOUNT SUB-BOTTOM PROFILER

Building on the long running success of the EdgeTech sub-bottom profiler product line, the new over-the-side pole mount 3400-OTS provides users many unique enhancements to current sub-bottom profiler systems. The 3400-OTS transmits wide band Frequency Modulated (FM) pulses utilizing EdgeTech's proprietary Full Spectrum CHIRP technology.

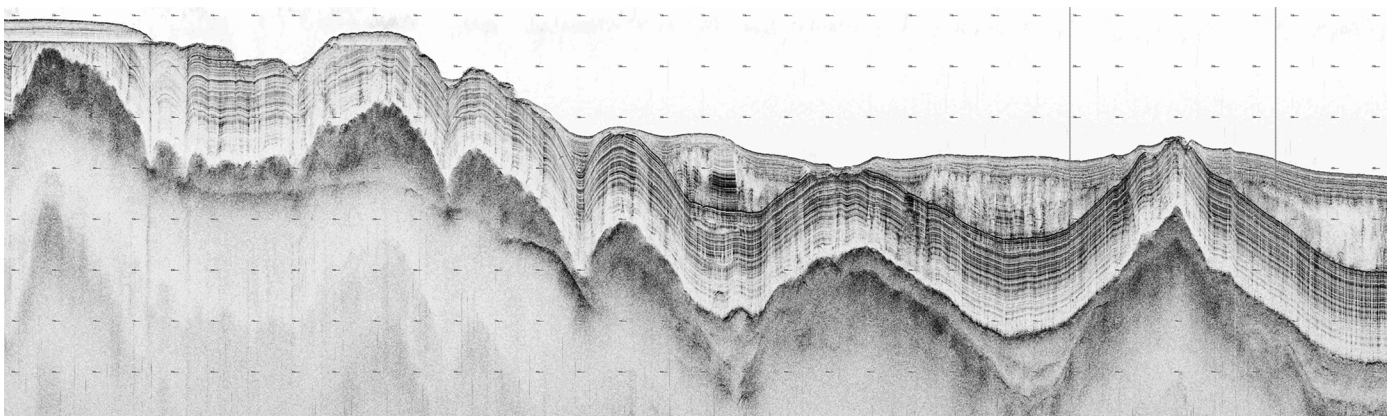


The system uses flat multi-channel hydrophone array to generate high resolution images of the sub-bottom stratigraphy in oceans, lakes, and rivers and provides excellent penetration in various bottom types. The 3400-OTS receiver array is segmented for standard subbottom profiling operations or "pipeline" mode for optimal location and imaging of buried pipelines or cables.

The system offers real-time reflection coefficient measurements. This unique ability of the EdgeTech sub-bottom profiler system allows users the ability to collect complex 'analytic' data using linear system architecture to measure sediment reflection and analyze sediment type determination. Additionally, the system has discrete transmit and receive channels allowing for continuous data collection resulting in a high ping rate particularly important for construction and pipeline surveys.

The lightweight 3400-OTS is ideal for shallow water surveys using small boats of opportunity. While the low frequency model with dual transmitters and large receive array is ideal for deep water and windfarm applications.

The EdgeTech 3400-OTS sub-bottom profiling system comes as a complete package including EdgeTech's DISCOVER sub-bottom acquisition & processing software. The 3400-OTS can also be interfaced to 3rd party software.



## KEY SPECIFICATIONS

ACOUSTICS	3400-OTS ULTRA-LIGHT	3400-OTS LIGHT	3400-OTS LF
Frequency Range (kHz)	4-24	2-16	1-10
Number of Transmitters	1	1	2
Vertical Resolution (cm)	4-8	6-10	10-30
Penetration (typical) in sand (m)	2	6	20
Penetration (typical) in clay (m)	40	80	200
Transmission Type	Full Spectrum® FM Signal (CHIRP)		
MECHANICS	3400-OTS ULTRA-LIGHT	3400-OTS LIGHT	3400-OTS LF
Length/Width/Height (cm)	77 x 33 x 34	77 x 33 x 34	117 x 75 x 51
Weight in Air	21.4 kg (47 lbs)	26.3 kg (58 lbs)	145 kg (320 lbs)
Deck Cable Length (m)	20 (50 max)		
TOPSIDE INTERFACE			
Hardware	Rugged, portable splash proof enclosure (or rackmounted)		
Power Amplifier (Watt)	200	200	4000
Recommended Operating System	Windows® 10		
Display (Optional)	Splash resistant semi-rugged laptop		
File Format	Native JSF, SEG-Y & XTF		
Input/Output	Ethernet		
Power Input	120/220 VAC Auto sensing		



### FEATURES

- Three over-the-side mount configurations:
  - Ultra-Lightweight Shallow Water
  - Lightweight Shallow Water
  - Low Frequency Deep Water
- Pipeline survey mode
- Digital receiver with ethernet telemetry and power
- Real-time pitch, roll, heave and depth sensors
- Surface echo attenuation
- Pulse library tailored for different survey applications
- Dual frequency transmission

### APPLICATION

- Geological surveys
- Environmental site investigations
- Sediment classification
- Buried pipeline & cable surveys
- Archeological surveys
- Mining/dredging surveys
- Map, measure & classify sediment layers within the sea floor



Visit our website for more info:  
[www.echo81.com](http://www.echo81.com)



+1 706-522-3022 • [info@echo81.com](mailto:info@echo81.com)  
481 S. Jackson Street, Hartwell, GA 30643

