

# ECHO 81

YOUR SUBSEA SOLUTIONS SPECIALIST

ImpactSubsea

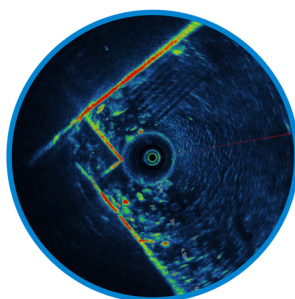
## ISS360 & ISS360HD HIGH PERFORMANCE IMAGING SONAR

ISS360 & ISS360HD utilising a broadband composite transducer together with an advanced digital acoustic engine provides excellent range capability and image clarity. For applications where Sonar Imaging, Pitch & Roll are required; all can be provided from a single device. The use of Compressed High Intensity Radar Pulse (CHIRP) acoustic signalling enables a significant increase in range resolution while maintaining an excellent range capability.

### ISS360



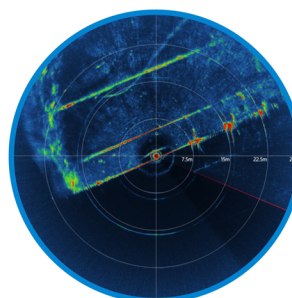
- > **90 METER RANGE**  
Long range imaging.
- > **6,000 & 4,000M DEPTH RATINGS**  
Ideal for Shallow and Deep Waters.
- > **PITCH & ROLL\***  
Provides Pitch and Roll to 0.2° accuracy.
- > **SMALL FORM FACTOR**  
Smallest Imaging Sonar available.
- > **BROADBAND TRANSDUCER**  
Excellent image quality & range.
- > **NO SLIP RINGS**  
No components to wear.



### ISS360HD



- > **100 METER RANGE**  
Long range imaging.
- > **6,000M DEPTH RATING**  
Ideal for shallow and deep water.
- > **PITCH & ROLL\***  
Provides Pitch and Roll to 0.2° accuracy.
- > **SMALL FORM FACTOR**  
Highly compact high resolution imaging sonar.
- > **BROADBAND TRANSDUCER**  
Excellent image quality & range.
- > **NO SLIP RINGS**  
No components to wear.



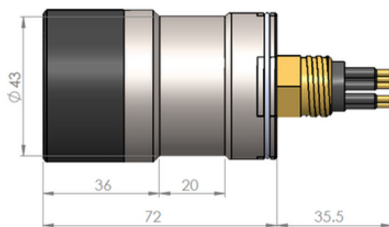
Provided in a highly robust Titanium housing.  
The unit can be supplied without pitch and roll.  
Alternative OEM configurations are available upon request.

# Technical Specifications

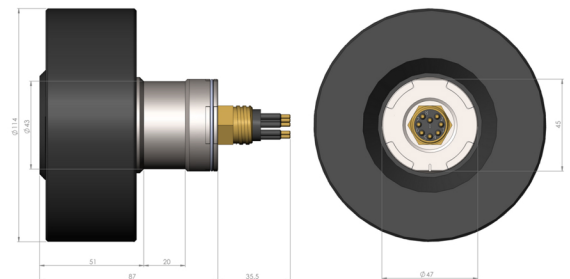
		ISS360	ISS360HD
ACOUSTIC	Frequency	700kHz Centre 600 to 900kHz Bandwidth	750kHz Centre 600 to 900kHz Bandwidth
	Range	0.15 to 90 meters (4,000m rated) 0.15 to 80 meters (6,000m rated)	0.45 to 100 meters
	Resolution	2.5mm (minimum)	
	Beam Angle	23° Vertical at 700kHz 2.2° Horizontal at 700kHz	30° Vertical at 700kHz 1° Horizontal at 700kHz
	Signalling Selectable	CHIRP & CW	
	Step Size Selectable	0.225°, 0.45°, 0.9°, 1.8°, 3.6° & 7.2°	
	Scan Angle	360° Continuous or Sector Scan	
PHYSICAL	Depth Rating	4,000m & 6,000m	6,000m
	Temperature	-10 to 40°C Operating -20 to 60°C Storage	
	Connector	Subconn MCBH8M-SS Other options available	
	Weight in Air/Fresh water	0.38/0.3kg (4,000m) 0.37/0.3kg (6,000m)	0.76/0.3kg
COMMS & POWER	Digital	RS232, RS485 & Ethernet	
	Protocol	9600 to 115,200 baud	
	Input Voltage	12 to 65V DC	
	Power Standby	95mA @ 24V DC	84mA @ 24V DC
	Power Scanning <sup>1</sup>	240mA @ 24V DC	261mA @ 24V DC
ATTITUDE*	Pitch	± 90°	
	Roll	± 180°	
	Accuracy	0.2°	
	Resolution	0.1°	

\*Optional

<sup>1</sup> Based on maximum power level and scanning speed.



Dimensions given in mm.



Dimensions given in mm.



Visit our website for  
more info:  
[www.echo81.com](http://www.echo81.com)

ImpactSubsea

+1 706-522-3022 • [info@echo81.com](mailto:info@echo81.com)  
481 S. Jackson Street, Hartwell, GA 30643

ECHO81