

ECHO 81

YOUR SUBSEA SOLUTIONS SPECIALIST



KONGSBERG

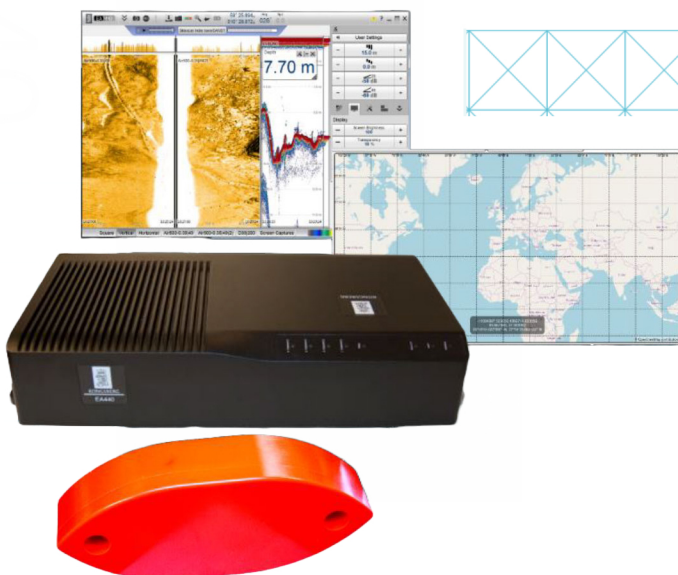
EA440

HYDROGRAPHIC ECHO SOUNDER

EA440 is a high performance hydrographic wide band single beam echo sounder. The echo sounder is developed for hydrographic use in shallow to medium depth waters. It supports portable and hull mounted sidescan and sub-bottom light for shallow waters.

The EA440 Wide Band Transceiver - WBT

- The 4-channel standard WBT transmits and receives data simultaneously on 4 channels, ranging from 10 kHz to 500 kHz. The channels can be configured in a variety of ways, allowing for different applications and/or redundancy.
- The WBT communicates with a standard Windows 10 computer running the EA440 software via an ethernet link. Several WBTs with different configurations can be used.
- The WBT is opened for applicable transducers using license management. Licenses can be added by the user by a license code provided by Kongsberg Maritime Support.
- The WBT is powered by a 12-15 VDC power supply.
- Wide band frequency sweep (FM) in combination with advanced signal processing gives an exceptionally good signal to noise ratio and range resolution.



The EA440 software

The EA440 software is an intuitive and user-friendly software. You can set up the display to suit your special needs. You can choose different presentations on the screen for echograms, map view, digital depth and other features. Save user settings for different operations and you can use these at your ease.

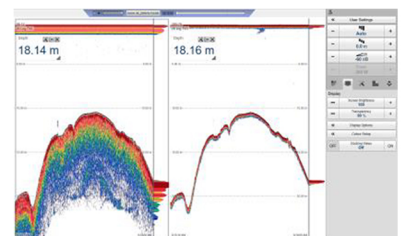
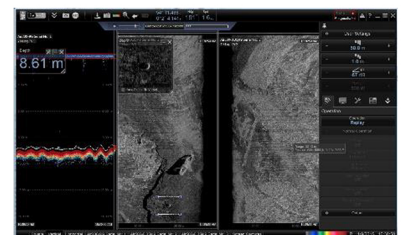
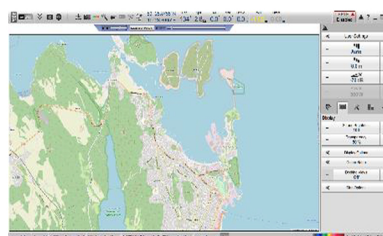
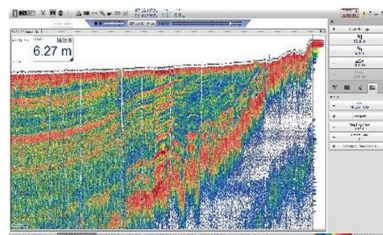
Technical Specifications

Performance	Pulse length and precision:
	– 500 kHz: CW 32 to 512µs, 0.3cm
	– 200 kHz: CW 64 to 1024 µs, 0.6 cm
	– 38 kHz: CW 256 to 4096 µs, 2.4 cm
	– 15 kHz: CW 512 to 8192 µs, 4.9 cm
	– 10 kHz: CW 1 to 16 ms, 9.8 cm
Range	Ping rate: max 40 per second
	– Display range: 1 to 12.500 m
	– Transducer range: 30 to 500 kHz
Sound speed	– Sub-bottom range: 10 to 30 kHz
	– Manual (1400 to 1700 m/s)
	– Calculated from temperature and salinity
External interfaces	– From sound velocity probe
	Transceiver: Ethernet communication
	Ethernet to ship's network
	Sensors: GPS, gyro, motion, speed, temperature, and sound speed
User interfaces	Remote control: Remote stop/start logging available on serial line or network
	Main control: Mouse, trackball or touch screen on a comprehensive menu system
Supported output	Menu languages: English, Norwegian, and a variety of other languages
	NMEA (DBS, DBP, DPT)
Export file formats	Simrad, Atlas and Hymas
	Raw data, XTF, SEG-Y, XYZ, Echogram, EA400, Marker and Parameters
WBT weight and dimensions	Depth: 213 mm
	Width: 438 mm
	Height: 84 mm
	Weight: 5 kg
Power specifications:	Voltage requirement: 12 to 15 VDC, 5A
	A suitable power supply for 220/110 VAC operation is provided with the delivery
Environmental specifications	Operational temperature: 0 to 50°C
	Storage temperature: -40 to 70°C
	Relative humidity: 5 to 95% relative non-condensing
	WBT IP Class: IP42

The EA map display

The EA440 map view provides a geographical display of the vessel, the vessel tracks and sidescan coverage if applicable. The map is supplied by the user based on WMS or GeoTIFF services. If no map is available, you will get the graticule lines displayed for you track and coverage for reference for you track and coverage.

EA440 offers internal storage of all raw sample data. This includes all external input sensor data for replay purposes.



Visit our website for more info:
www.echo81.com



KONGSBERG

+1 706-522-3022 • info@echo81.com
481 S. Jackson Street, Hartwell, GA 30643

ECHO81