

ECHO 81

YOUR SUBSEA SOLUTIONS SPECIALIST



KONGSBERG

M3 Sonar HF

HIGH-FREQUENCY MULTIBEAM

Kongsberg Mesotech's M3 Sonar HF is a multibeam system with both imaging and profiling capabilities. The M3 Sonar HF provides high-resolution and easy-to-interpret images by combining the rapid refresh rate of a conventional multibeam sonar with image quality comparable to a single-beam sonar.

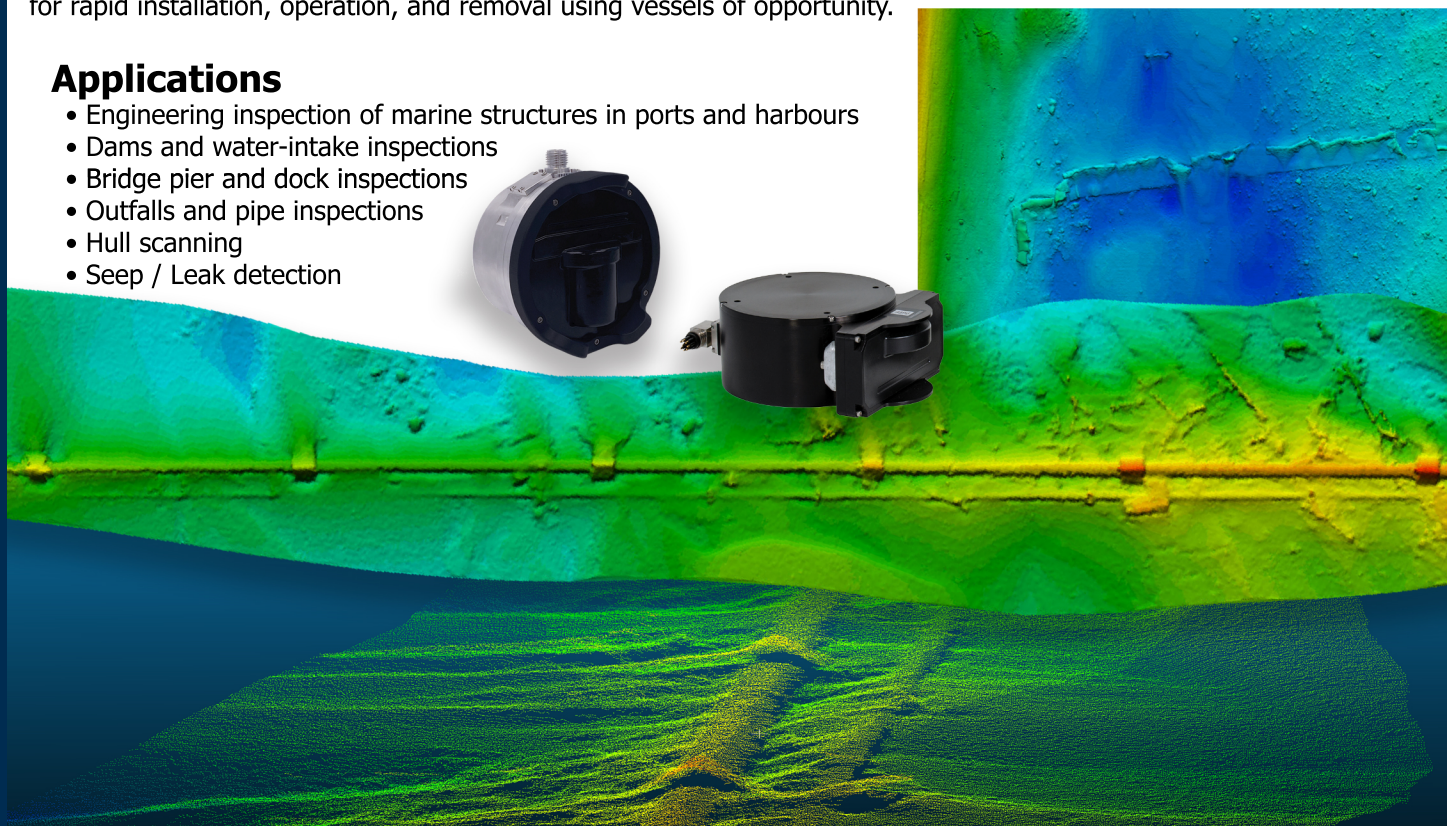
Key Facts

The M3 Sonar HF and Flexview HF are powerful, affordable, entry-level turnkey sonars. These small, but high-performance, multibeam sonar heads require only a laptop and power supply to operate.

The M3 Sonar HF and Flexview HF deliver excellent quality data at a very low cost of ownership. They are designed for rapid installation, operation, and removal using vessels of opportunity.

Applications

- Engineering inspection of marine structures in ports and harbours
- Dams and water-intake inspections
- Bridge pier and dock inspections
- Outfalls and pipe inspections
- Hull scanning
- Seep / Leak detection



TECHNICAL SPECIFICATIONS

SONAR SPECIFICATIONS

Range: 0.2 m to 100 m
Range resolution: 1 cm
Frequency: 700 kHz - 1400 kHz
Pulse types: CW, CHIRP
Update rate: up to 40 Hz
Max. number of beams: 512

700-KHZ MODES

Detection range: 100 m
Coverage: 140°
Imaging beamwidth: 1.0° x 30°
Profiling beamwidth: 1.0° x 1.8°

950-KHZ MODES

Detection range: 70 m
Coverage: 140°
Imaging beamwidth: 0.8° x 27°
Profiling beamwidth: 0.8° x 1.4°

1200-KHZ MODES

Detection range: 50 m
Coverage: 75°
Imaging beamwidth: 0.65° x 21°
Profiling beamwidth: 0.65° x 1.1°

1400-KHZ MODES

Detection range: 30 m
Coverage: 45°
Imaging beamwidth: 0.55° x 18°
Profiling beamwidth: 0.55° x 0.9°

INTERFACE SPECIFICATIONS

Communication: Ethernet
Data rates: 10/100 Mbps
Input voltage: 12 to 36 VDC
Input power: 50 W (avg.),
peak power < 70 W,
mode dependant
Operating System: Windows 10
Synchronization: PRI Sync, 1PPS

ENVIRONMENTAL SPECIFICATIONS

Temperature
Operation: -2°C to +38°C
Storage: -40°C to +55°C

MECHANICAL SPECIFICATIONS

Width: 218 mm (8.59 in)
Height: 144 mm (5.67 in)
Weight in Air: 7.8 kg (17.3 lbs)
Weight in Water: 5.0 kg (11.0 lbs)
Depth Rating: 4000 m
Connector Type: SEA CON®
Connector Model: MINK-10-FCRL
Materials: Titanium,
Elastomeric Polyurethane



Possible areas of spalling that should be reinspected



Visit our website for
more info:
www.echo81.com



KONGSBERG

+1 706-522-3022 • info@echo81.com
481 S. Jackson Street, Hartwell, GA 30643

ECHO81